



Valentine House, Fulham  
SW6

[GARTONJONES.COM](http://GARTONJONES.COM)



# Valentine House, Fulham , SW6

GARTON JONES.COM

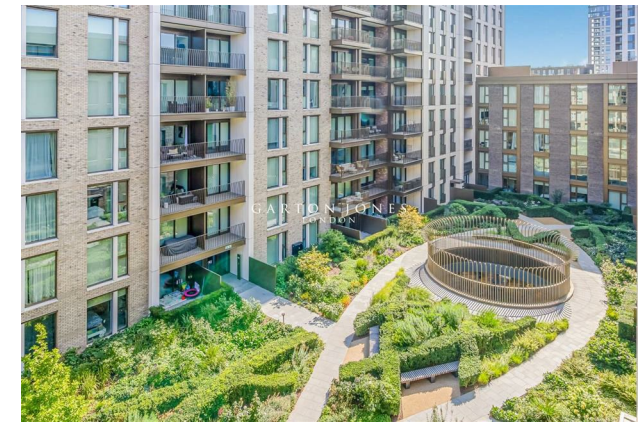
11 Park Street  
Chelsea Creek  
London  
SW6 2FS

Sales +44 (0) 20 7824 7090  
paul@gartonjones.com  
www.gartonjones.com

## £1,100 Per Week

Available from the 1st September is this stylish two-bedroom apartment 813sqft (75sqm) which benefits from desirable views of the stunning communal gardens. The apartment comes elegantly furnished and offers well-proportioned accommodation with a high-class finish comprising of an open plan lounge with access to the balcony and a luxury kitchen, two double bedrooms, ensuite to the master as well as a further family bathroom. Kings Road Park is a highly popular development built by Berkeley Homes and boasts fantastic residence facilities including a 24-hour concierge, swimming pool, gymnasium, two cinema rooms, private kitchen area, games room and stunning residents' lounge. The famous King's Road is less than a mile away and Fulham Broadway station is an 8-minute walk with District line services serving Central London.

- Highly Desirable Kings Road Park Development
- Stunning Two Bedroom Apartment
- 813sqft (75sqm)
- Directly overlooking well maintained communal gardens
- En Suite To Master Bedroom
- Stylishly Furnished
- 5th Floor with Balcony
- Residents Games Room & Golf Simulator
- Fitness Centre, Indoor Pool, Sauna & Steam room, Gymnasium
- 24 Hour Concierge



Available 1st September 2025

6 Weeks Security Deposit

12 Month Tenancy

Council Tax — Hammersmith & Fulham — Band G

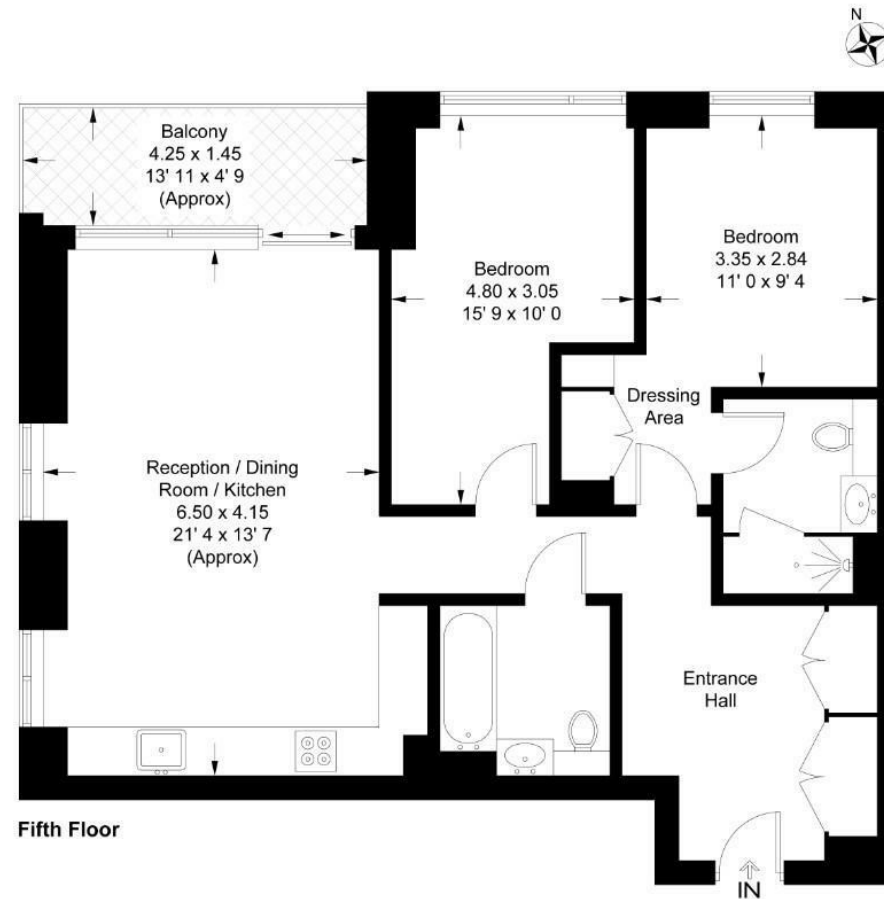
EPC B

EPC certificate available on request.

## Valentine House

Approximate Gross Internal Area = 813 sq ft / 75.5 sq m  
Balcony = 66 sq ft / 6.1 sq m

GARTON JONES  
LONDON



Fifth Floor

This plan is not to scale and must be used as layout guidance only. All measurements and areas are approximate and should not be relied upon to provide accurate information. This plan must not be relied upon when making property valuations, design considerations or any other such relevant decisions. We accept no responsibility or liability (whether in contract, tort or otherwise) in relation to any loss whatsoever arising from or in connection with any use of this plan or the adequacy, accuracy or completeness of it or any information within it.





